

# winterhalter

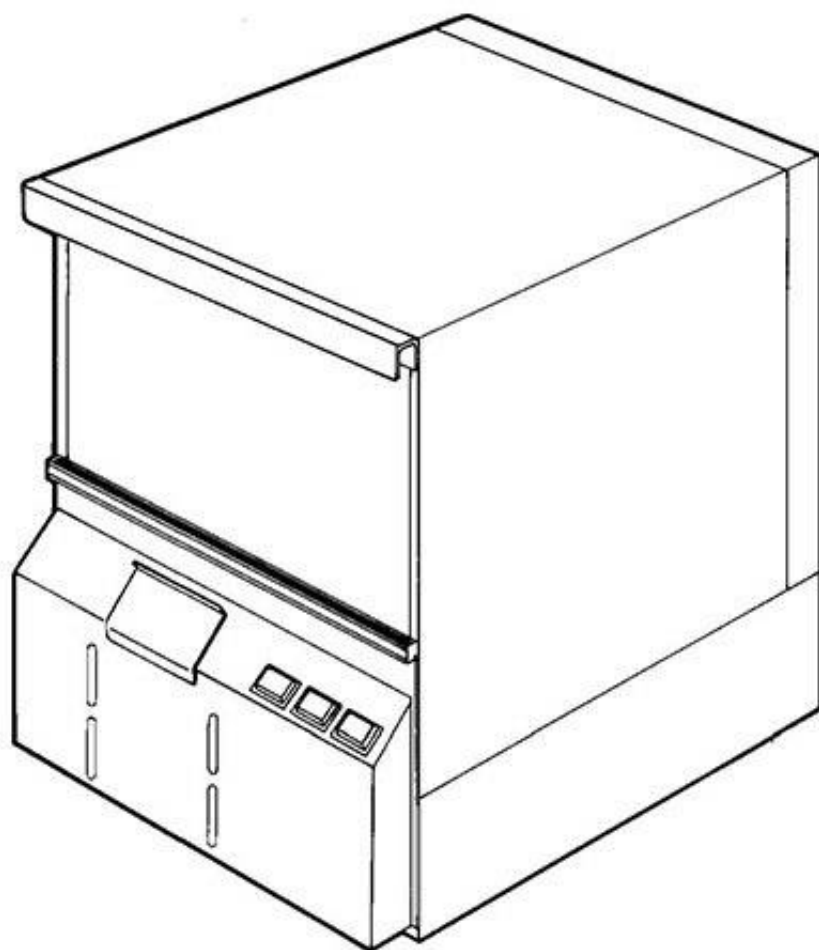
---

## Spare Parts List GS 23 H

Edited 7/90

Revised 10/04

Part no. 89000915



## Summary

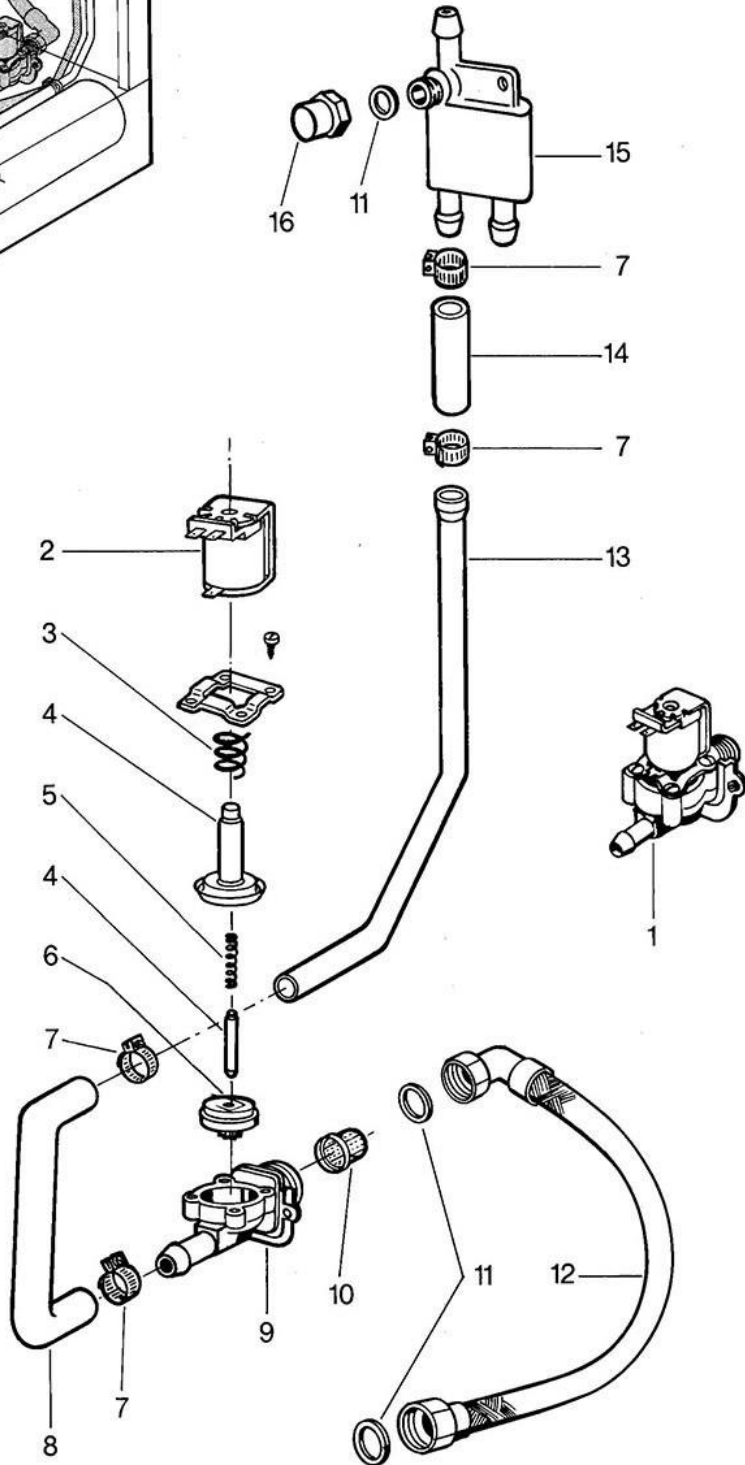
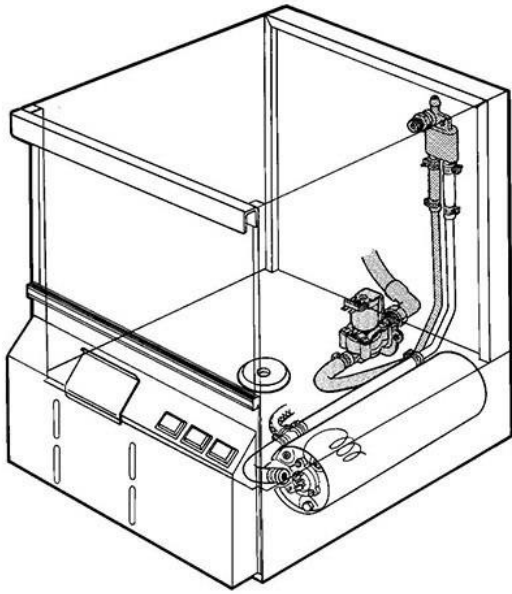
|                                    |                |
|------------------------------------|----------------|
| Water inlet                        | Page 1 and 2   |
| Water supply and dosing            | Page 3 and 4   |
| Water drain and tank heating       | Page 5 and 6   |
| Wash system I                      | Page 7 and 8   |
| Wash system II                     | Page 9 and 10  |
| Rinsing I                          | Page 11 and 12 |
| Rinsing II                         | Page 13 and 14 |
| Door                               | Page 15 and 16 |
| Panel, base frame<br>and container | Page 17 and 18 |
| Electrical parts I                 | Page 19 and 20 |
| Electrical parts II                | Page 21 and 22 |

Parts that have the note " Part made to order only!", are not in stock. This parts are made specially for your order and have a delivery time. They are not returnable.

Racks and accessories see separate list.

### GS 23 H

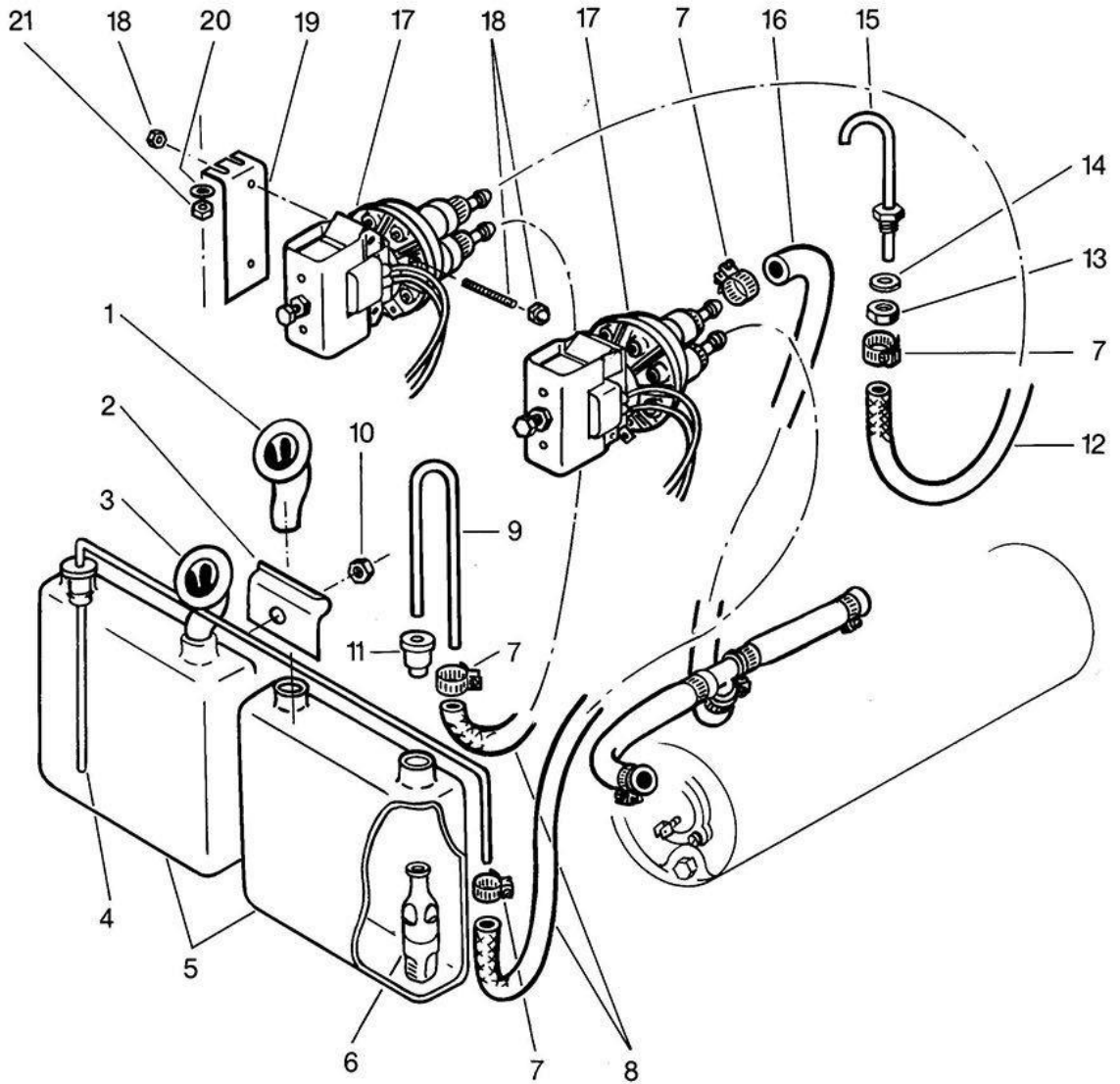
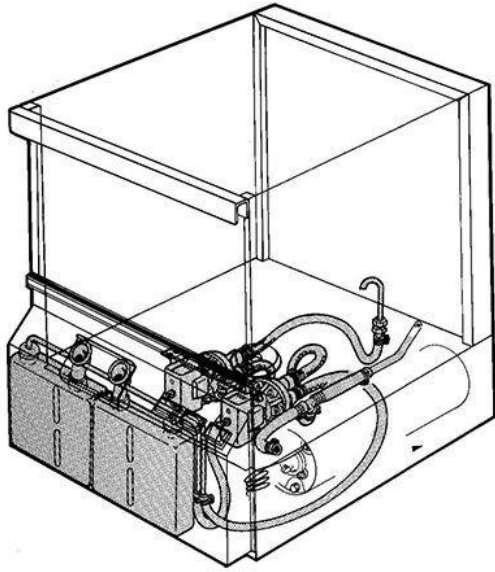
**Wasserzulauf**  
Water inlet  
Alimentation d'eau





### GS 23 H

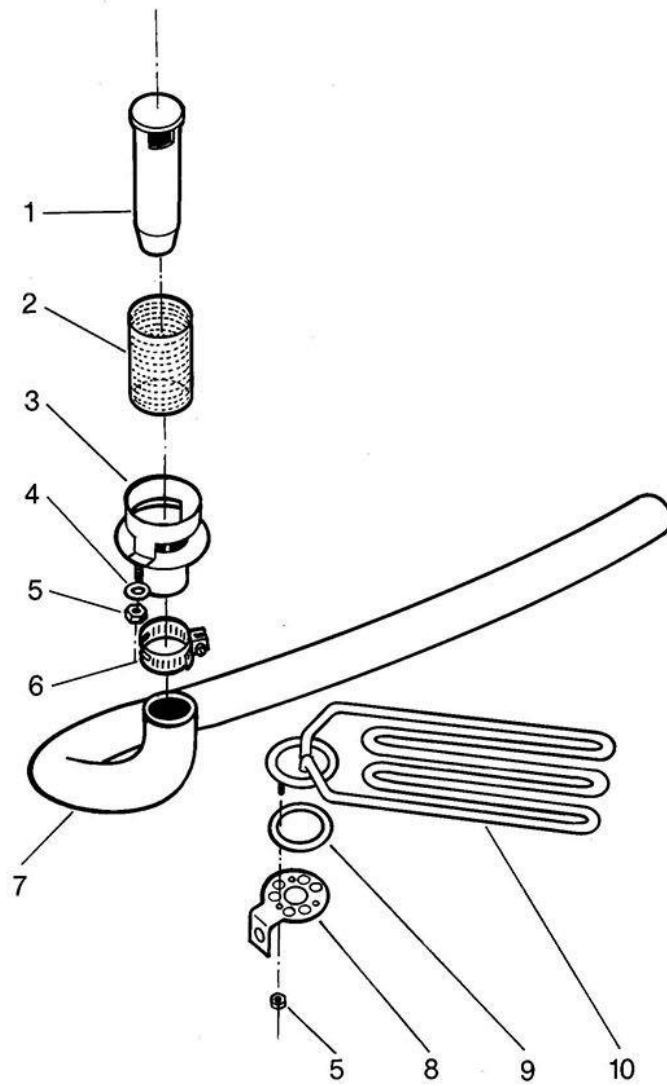
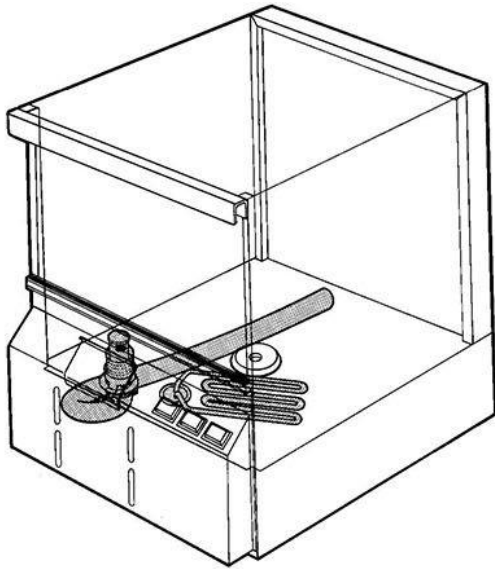
**Wassereinlauf und Dosierung**  
Water supply and dosing  
Arrivée d'eau et dosage





## GS 23 H

**Wasserablauf und Tankheizung**  
Water drain and tank heating  
Ecoulement d'eau et chauffage de la cuve

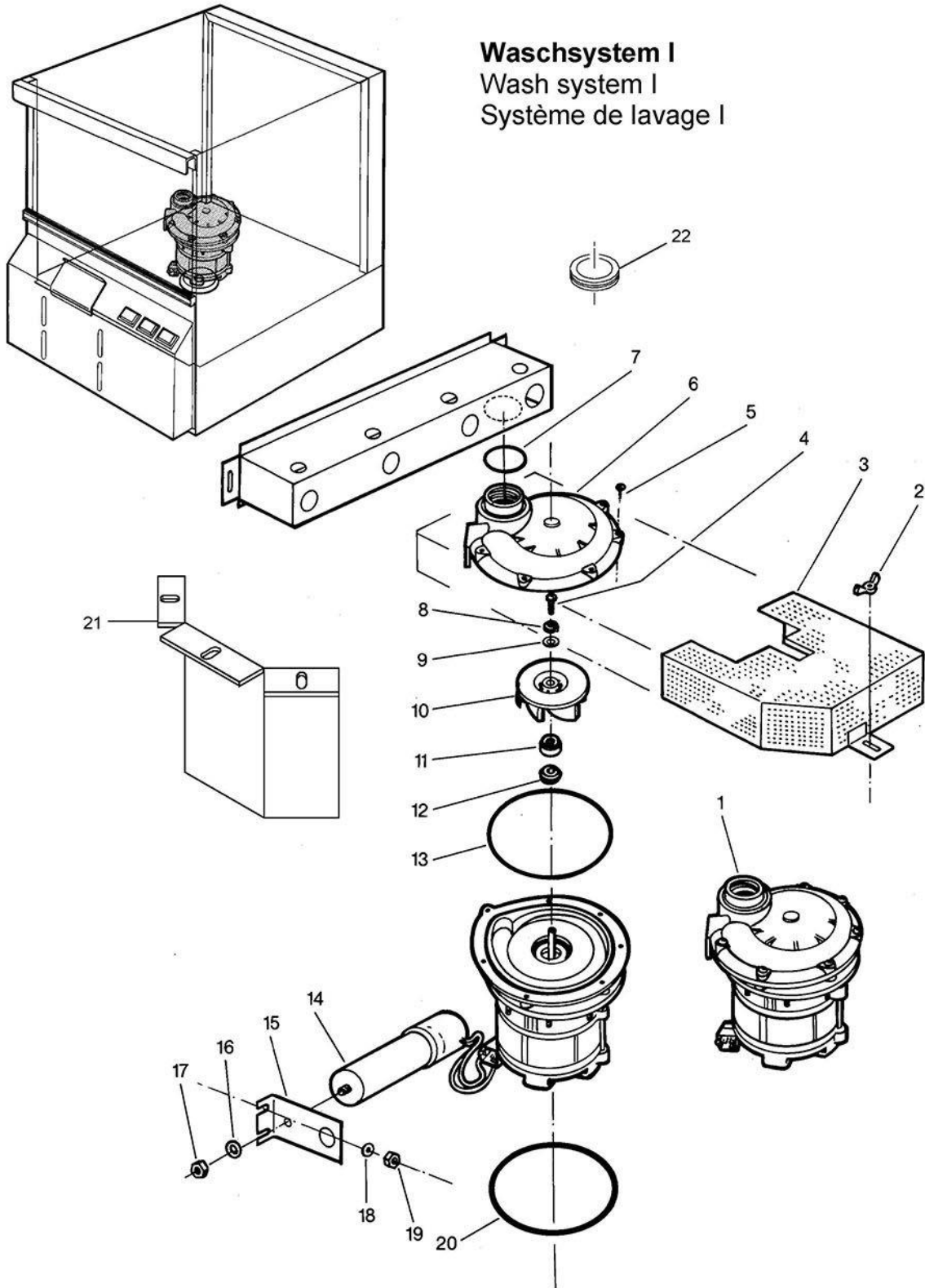






# GS 23 H

## Waschsystem I Wash system I Système de lavage I



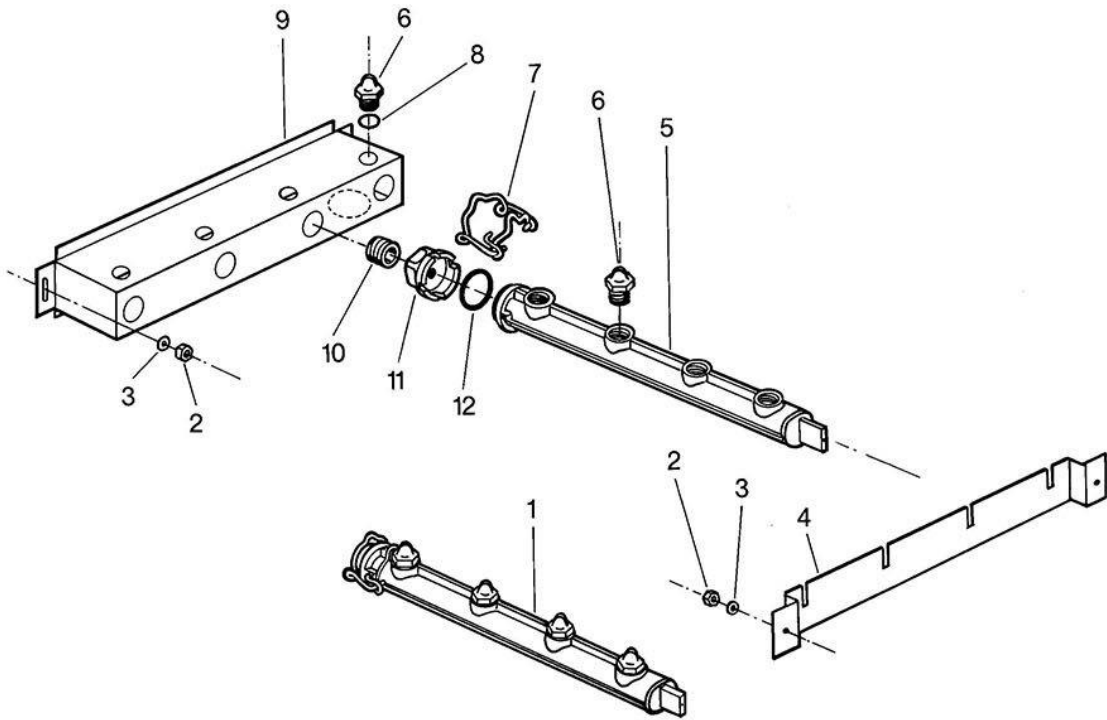
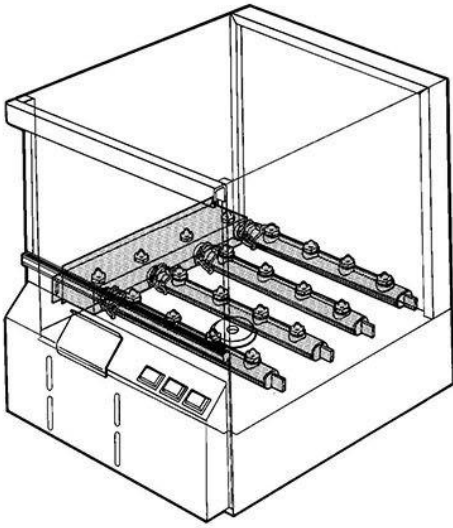
## GS 23 H

### Wash system

| Pos. | Designation                                       | Part no.  | Notes  |
|------|---|-----------|--|
| 1    | Pump 0,24 kW 230 V                                | 31 02 332 |  |
| n.p. | Pump 0,24 kW 240 V                                | 31 02 040 |  |
| n.p. | Pump 220 V 60 Hz                                  | 31 02 069 |  |
| 2    | Wing nut M 5                                      | 21 15 305 |  |
| 3    | Pump filter                                       | 55 13 019 |  |
| 4    | Lens head screw M 5 x 12                          | 20 18 301 | left-handed thread                               |
| 5    | Sheet metal screw 4,2 x 16                        | 20 20 303 |  |
| 6    | Pump housing                                      | 31 02 215 |  |
| 7    | O-ring $\varnothing$ 46 x 6                       | 27 07 069 |  |
| 8    | Spring washer B 5                                 | 23 03 302 |  |
| 9    | Washer $\varnothing$ 12 x $\varnothing$ 5,3 x 0,8 | 22 02 213 |  |
| 10   | Pump impeller $\varnothing$ 86 50 Hz              | 31 02 217 |  |
| n.p. | Pump impeller $\varnothing$ 67 60 Hz              | 55 14 033 |  |
| 11   | Motor shaft seal                                  |           | Gasket set 80002674<br>Incl. Pos. 11,12,13,4,8,9 |
| 12   | Counter-ring                                      |           |  |
| 13   | O-ring for pump housing                           | 31 02 216 |  |
| 14   | Capacitor 12,5 $\mu$ F                            | 31 13 028 |  |
| 15   | Bracket for level switch                          | 62000193  |  |
| 16   | Washer $\varnothing$ 8,4                          | 22 01 303 |  |
| 17   | Hexagon screw M 8                                 | 21 01 305 |  |
| 18   | Washer $\varnothing$ 5,3                          | 22 01 300 |  |
| 19   | Hexagon nut M 5                                   | 21 01 303 |  |
| 20   | O-ring $\varnothing$ 155 x 5                      | 27 07 024 |  |
| 21   | Splash board for pump                             | 62001421  |  |
| 22   | Grommet; D44 X D58 X 10                           | 40 07 030 |  |
|      |   |           |  |
|      |   |           |  |
|      |   |           |  |
|      |   |           |  |

### GS 23 H

### Waschsystem II Wash system II Système de lavage II



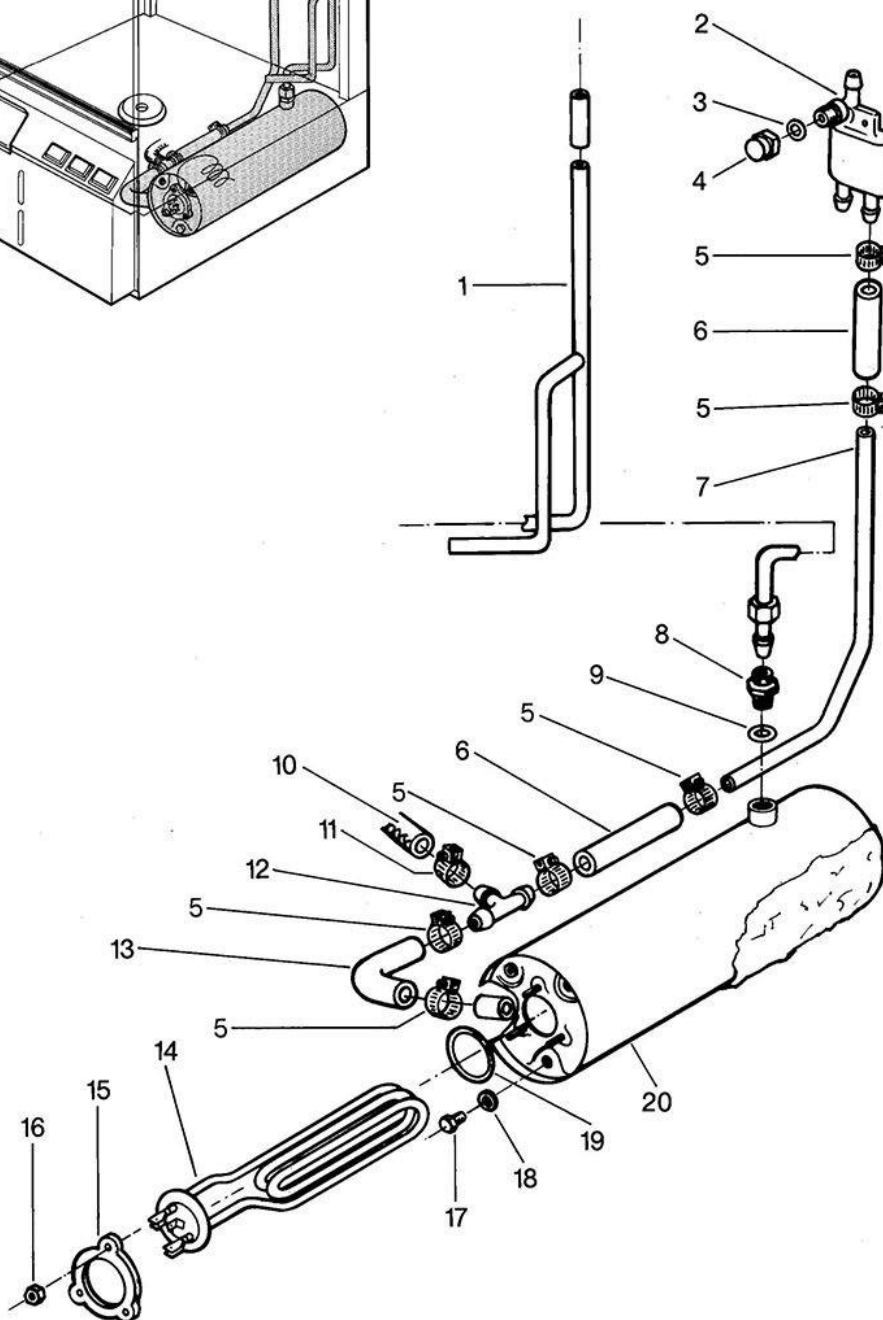
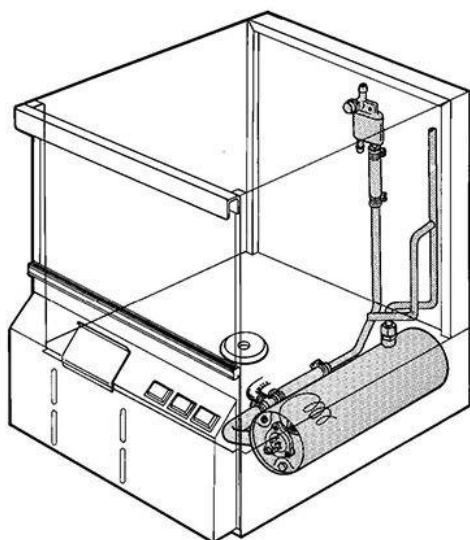


### GS 23 H

### Nachspülung I

Rinsing I

Rinçage I



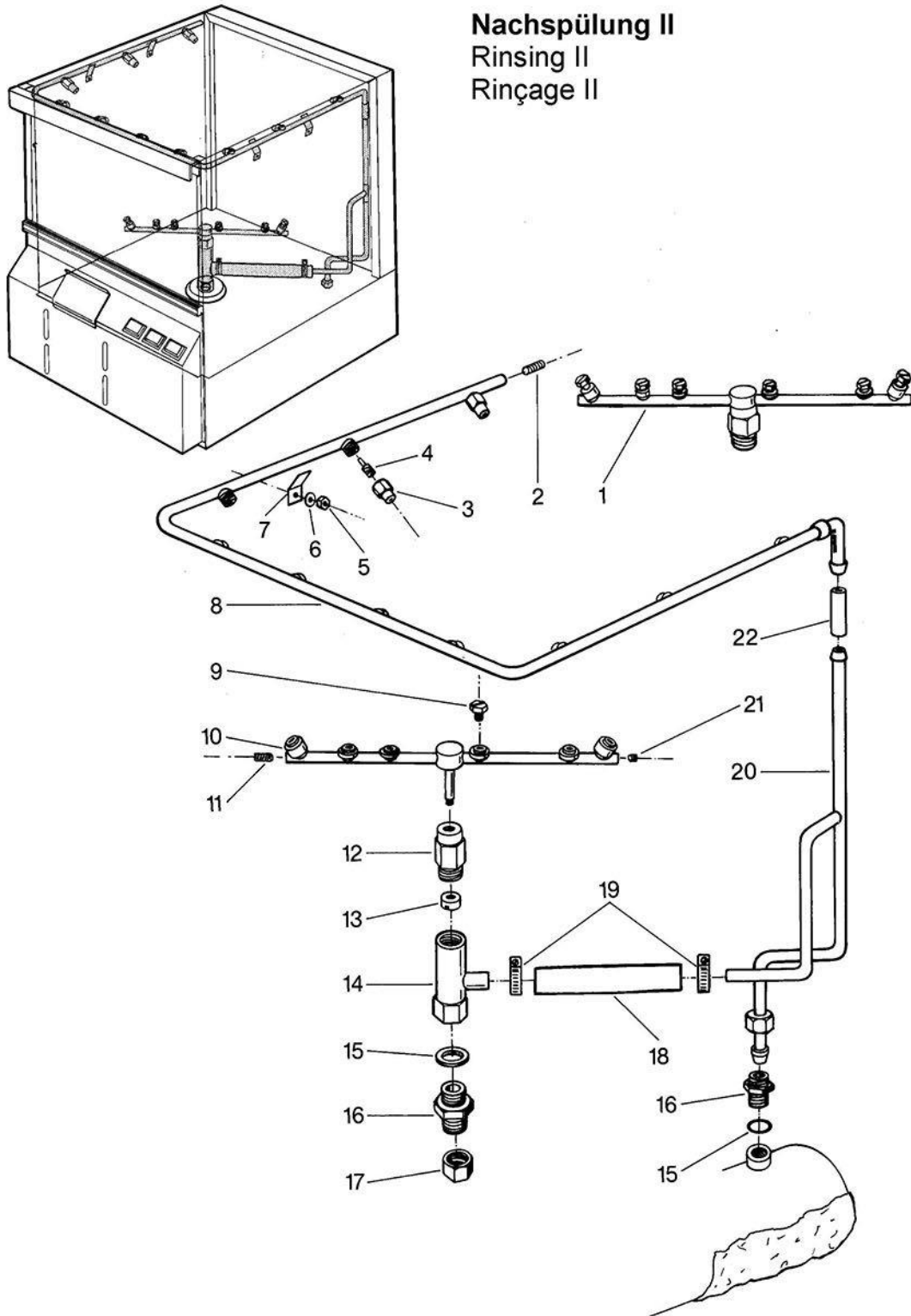
## GS 23 H

### Rinsing I

| Pos. | Designation  | Part no.  | Notes                   |
|------|--|-----------|-------------------------|
| 1    | Rinse manifold cpl.                                  | 62000280  |                         |
| 2    | Backflow restrictor "S"                              | 35 01 194 |                         |
| 3    | Seal $\varnothing$ 24 x $\varnothing$ 17 x 2         | 27 09 009 |                         |
| 4    | Vent cap 3/8" BSP                                    | 61004545  |                         |
| 5    | Hose clip $\varnothing$ 14 - $\varnothing$ 24        | 28 02 108 |                         |
| 6    | Hose piece $\varnothing$ 13,5 x 3,5 x 100 lg.        | 40 02 029 | per metre               |
| 7    | Pipe I   | 62002520  |                         |
| 8    | Double nipple 1/2" BSP x 34                          | 30 11 301 |                         |
| 9    | Fibre washer $\varnothing$ 28 x $\varnothing$ 21 x 2 | 27 09 011 |                         |
| 10   | Hose piece $\varnothing$ 5 x 3 x 340                 | 40 01 024 | per metre               |
| 11   | Wire hose clip                                       | 28 02 348 |                         |
| 12   | T-piece  | 35 01 086 |                         |
| 13   | Hose elbow   | 40 03 001 |                         |
| 14   | Heating element 2,8 kW 220 V                         | 31 03 084 |                         |
| n.p. | Heating element 2,8 kW 240 V                         | 31 03 111 |                         |
| 15   | Clamping plate                                       | 01 17 003 |                         |
| 16   | Hexagon nut M 5                                      | 21 01 303 |                         |
| 17   | Locking bolt M 10 x 14                               | 20 01 352 |                         |
| 18   | Seal $\varnothing$ 18 x $\varnothing$ 10 x 1,5       | 27 09 013 |                         |
| 19   | O-ring $\varnothing$ 46 x 6                          | 27 07 069 |                         |
| 20   | Boiler   | 55 12 007 | without heating element |
|      |  |           |                         |
|      |  |           |                         |
|      |  |           |                         |
|      |  |           |                         |
|      |  |           |                         |

# GS 23 H

## Nachspülung II Rinsing II Rinçage II

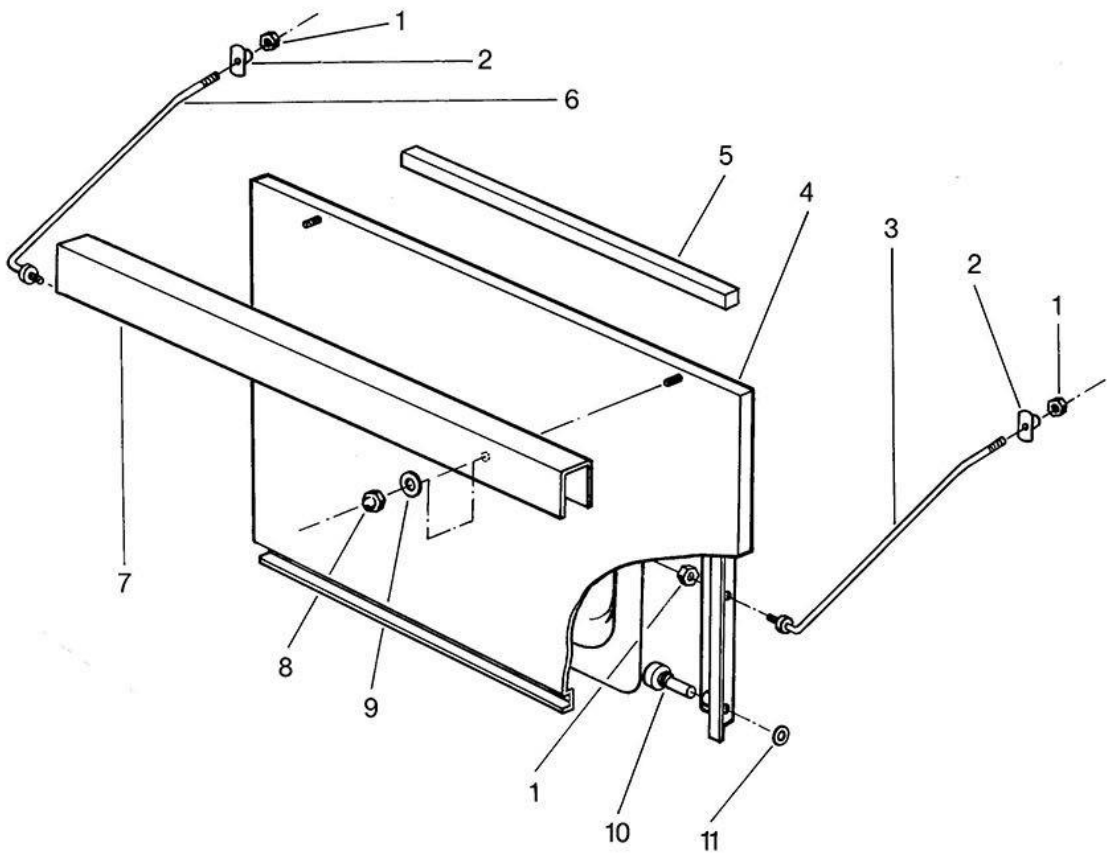
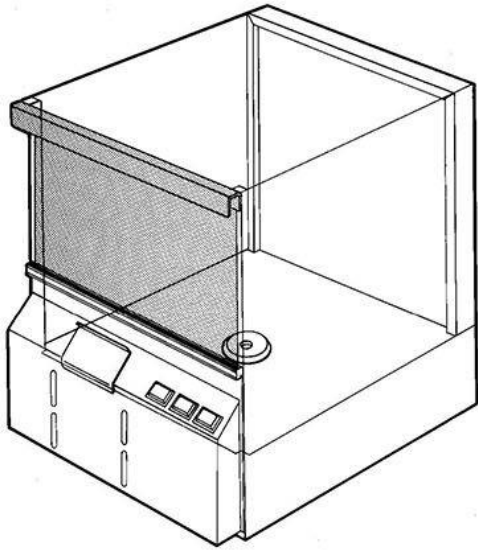






# GS 23 H

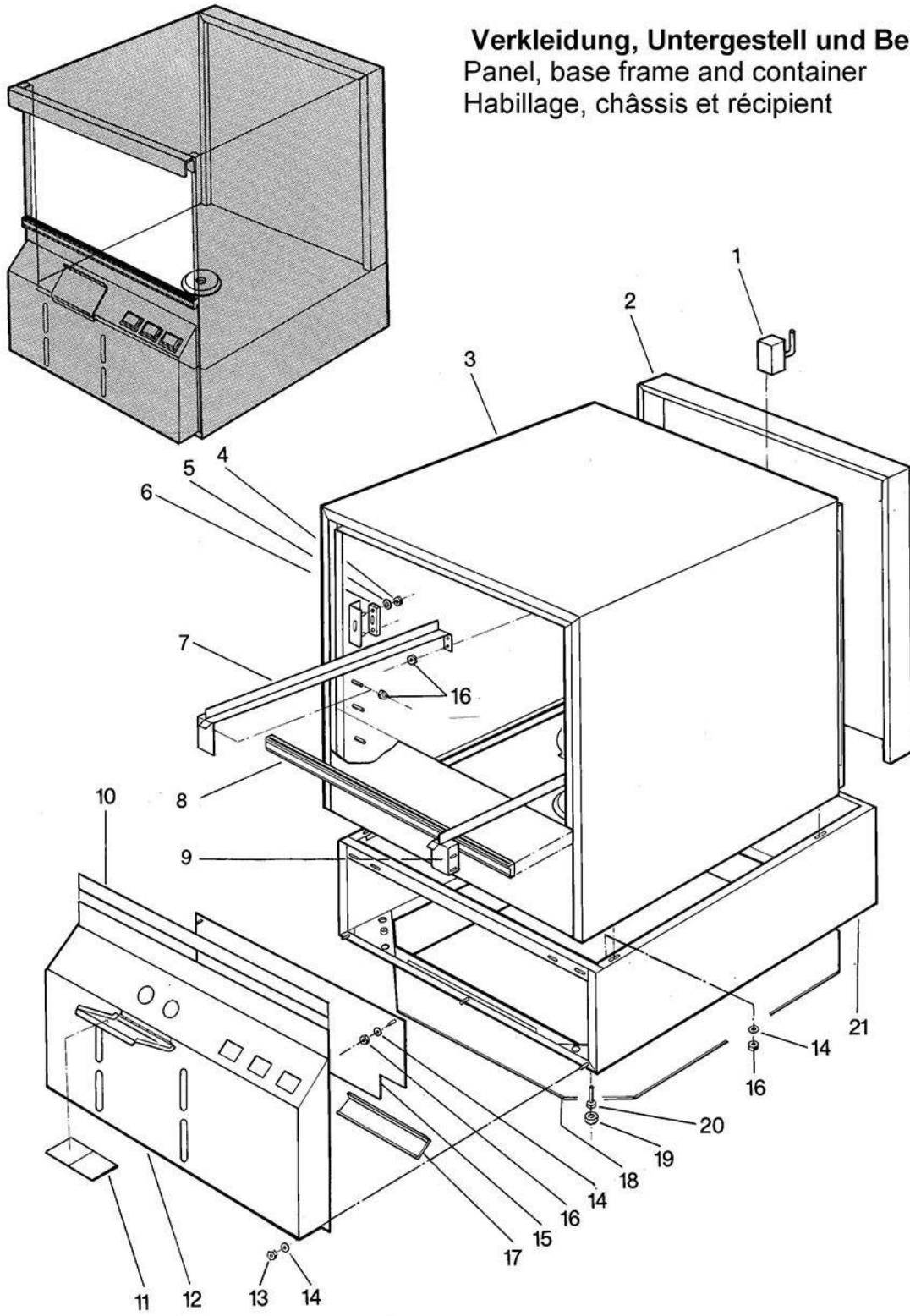
Türe  
Door  
Porte





### GS 23 H

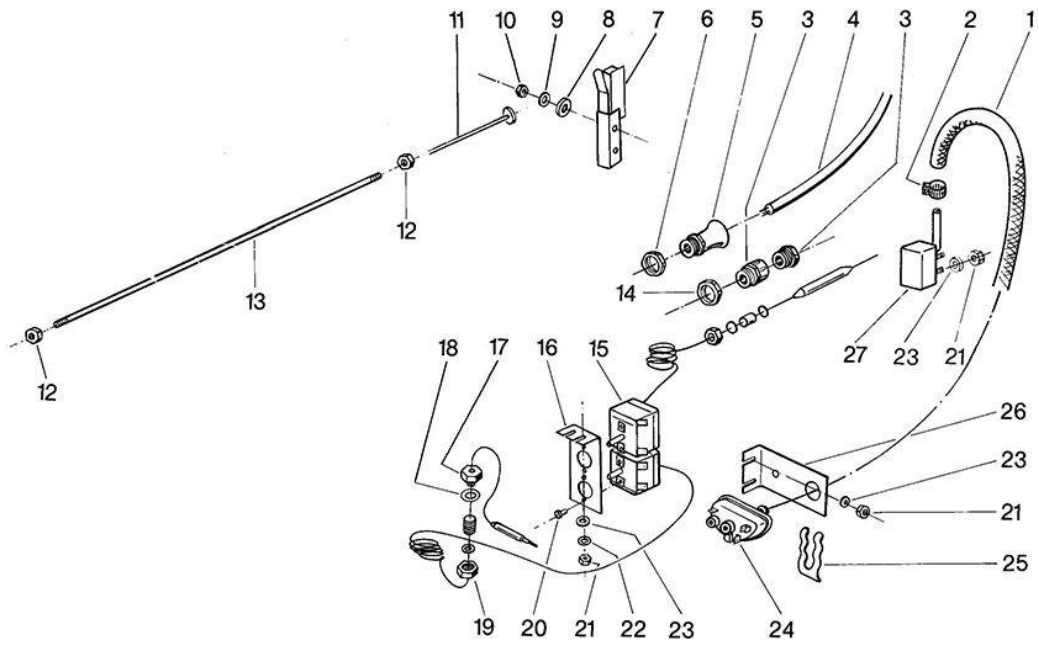
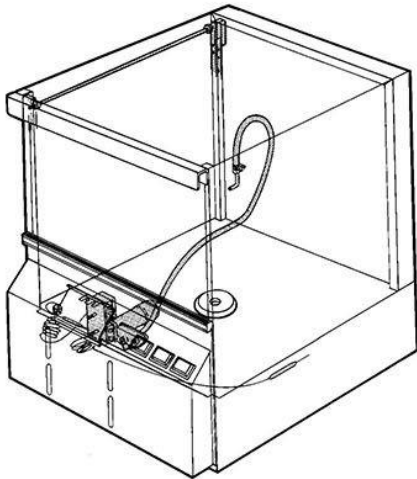
**Verkleidung, Untergestell und Behälter**  
Panel, base frame and container  
Habillage, châssis et récipient





## GS 23 H

### Elektroteile I Electrical parts I Matériel électrique I



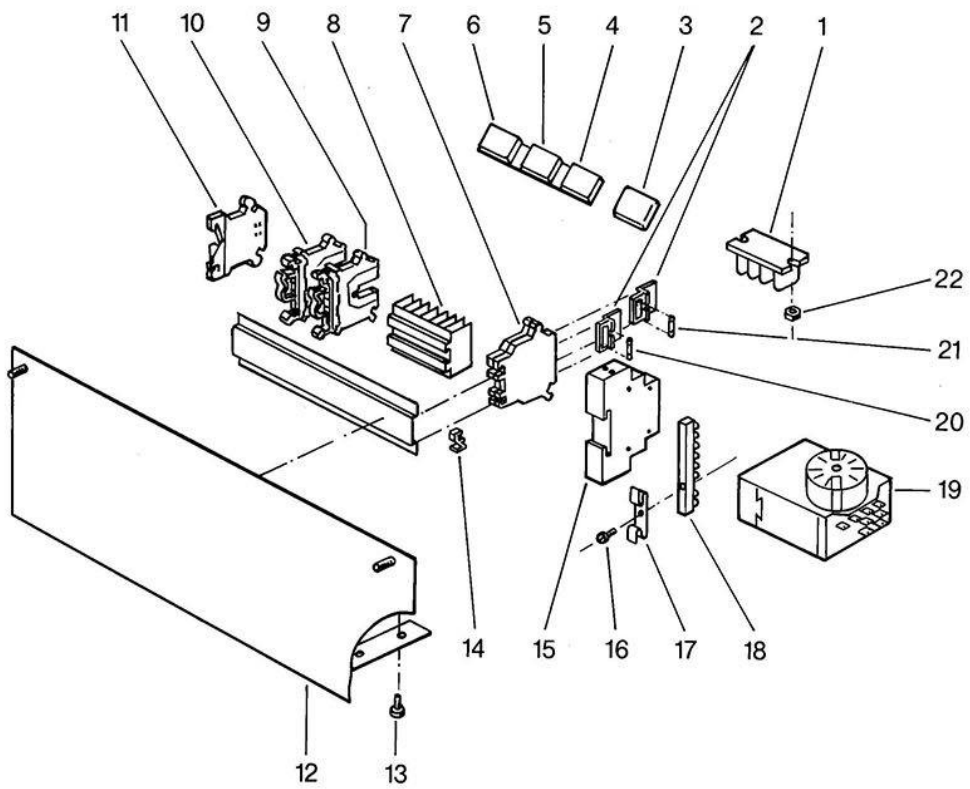
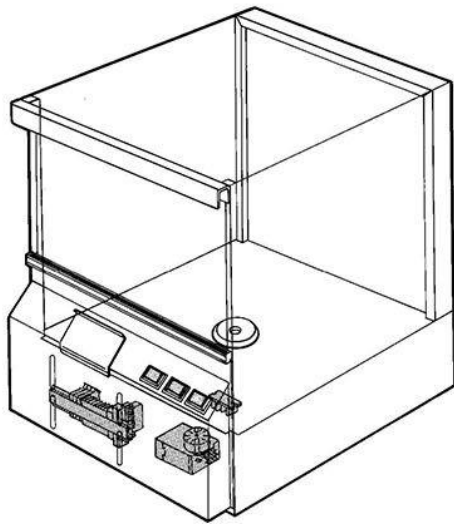
## GS 23 H

### Electrical parts I

| Pos. | Designation  | Part no.  | Notes                   |
|------|--|-----------|-------------------------|
| 1    | Hose piece $\varnothing$ 5 x 3 x 900               | 40 01 024 | per metre               |
| 2    | Wire hose clip                                     | 28 02 348 |                         |
| 3    | Cable gland PG 11                                  | 31 10 044 |                         |
| 4    | Mains cable  | 31 23 125 |                         |
| 5    | Cable clamp PG 13,5 with strain-relief             | 31 10 040 |                         |
| 6    | Hexagon nut PG 13,5                                | 31 10 041 |                         |
| 7    | Limit switch cpl.                                  | 62000224  | with support and spring |
| 8    | Washer $\varnothing$ 4,3                           | 22 02 302 |                         |
| 9    | Spring washer B 4                                  | 23 03 304 |                         |
| 10   | Hexagon nut M 4                                    | 21 01 302 |                         |
| 11   | Switch rod   | 28 15 030 |                         |
| 12   | Hexagon nut M 6                                    | 21 02 304 |                         |
| 13   | Guide pipe $\varnothing$ 6 x 1,2 x 436             | 62000250  |                         |
| 14   | Hexagon nut PG 11                                  | 31 10 045 |                         |
| 15   | Thermostat 1750 lg.                                | 31 25 010 | boiler                  |
| n.p. | Thermostat 1750 lg.                                | 3125013   | tank                    |
| n.p. | Gland screwing                                     | 3125012   |                         |
| 16   | Thermostat bracket                                 | 62000194  |                         |
| 17   | Gland for thermostat                               | 31 25 001 |                         |
| 18   | Seal $\varnothing$ 22,5 x $\varnothing$ 14,2 x 1,5 | 27 09 007 |                         |
| 19   | Hexagon nut M 14 x 1                               | 31 25 002 |                         |
| 20   | Pan head screw M 4 x 8                             | 20 10 309 |                         |
| 21   | Hexagon nut M 5                                    | 21 01 303 |                         |
| 22   | Spring washer B 5                                  | 23 03 302 |                         |
| 23   | Washer $\varnothing$ 5,3                           | 22 01 300 |                         |
| 24   | Level switch red                                   | 31 26 009 |                         |
| 25   | Clamping spring for level switch                   | 31 26 001 |                         |
| 26   | Bracket for level switch                           | 62000193  |                         |
| 27   | Air chamber cpl.                                   | 62000221  |                         |
| n.p. | Wiring loom  | 31 23 100 |                         |
|      |  |           |                         |
|      |  |           |                         |
|      |  |           |                         |
|      |  |           |                         |

### GS 23 H

#### Elektroteile II Electrical parts II Matériel électrique II



## GS 23 H

### Electrical parts II

| Pos. | Designation                       | Part no.  | Notes        |
|------|-----------------------------------|-----------|--------------|
| 1    | Terminal block                    | 31 09 011 |              |
| 2    | Two-pin fuse                      | 31 09 072 |              |
| 3    | Cap transparent                   | 31 24 116 |              |
| 4    | Commutator key                    | 31 24 035 |              |
| 5    | Pilot lamp white                  | 31 08 017 |              |
| 6    | Commutator switch                 | 31 24 034 |              |
| 7    | Fuse base block UK-SI             | 31 09 063 | 2 x          |
| 8    | Terminal 13-fold                  | 55 19 072 |              |
| 9    | Terminal block blue               | 31 09 050 |              |
| 10   | Terminal block grey               | 31 09 049 |              |
| 11   | Earth terminal block yellow/green | 31 09 064 |              |
| 12   | Plate cpl.                        | 62000212  |              |
| 13   | Pan head screw M 4 x 8            | 20 10 309 |              |
| 14   | Retaining clip                    | 31 09 012 |              |
| 15   | Pulsing relay                     | 31 04 117 | dosage       |
| 16   | Lens head screw M 4 x 8           | 20 10 310 |              |
| 17   | Catch spring for prot. wire       | 55 19 030 |              |
| 18   | Earth terminal strip              | 31 09 094 |              |
| 19   | Programme switch                  | 31 05 100 |              |
| 20   | Fuse 250 V 0,16 A                 | 31 11 044 |              |
| 21   | Fuse 250 V 6,3 A                  | 31 11 043 |              |
| 22   | Hexagon nut M 4                   | 21 01 302 |              |
| n.p. | Wire assortment                   | 31 23 045 |              |
| n.p. | Flashlight relay with cable       | 55 28 121 |              |
| n.p. | Mains cable                       | 31 23 125 | without plug |
|      |                                   |           |              |
|      |                                   |           |              |
|      |                                   |           |              |
|      |                                   |           |              |
|      |                                   |           |              |